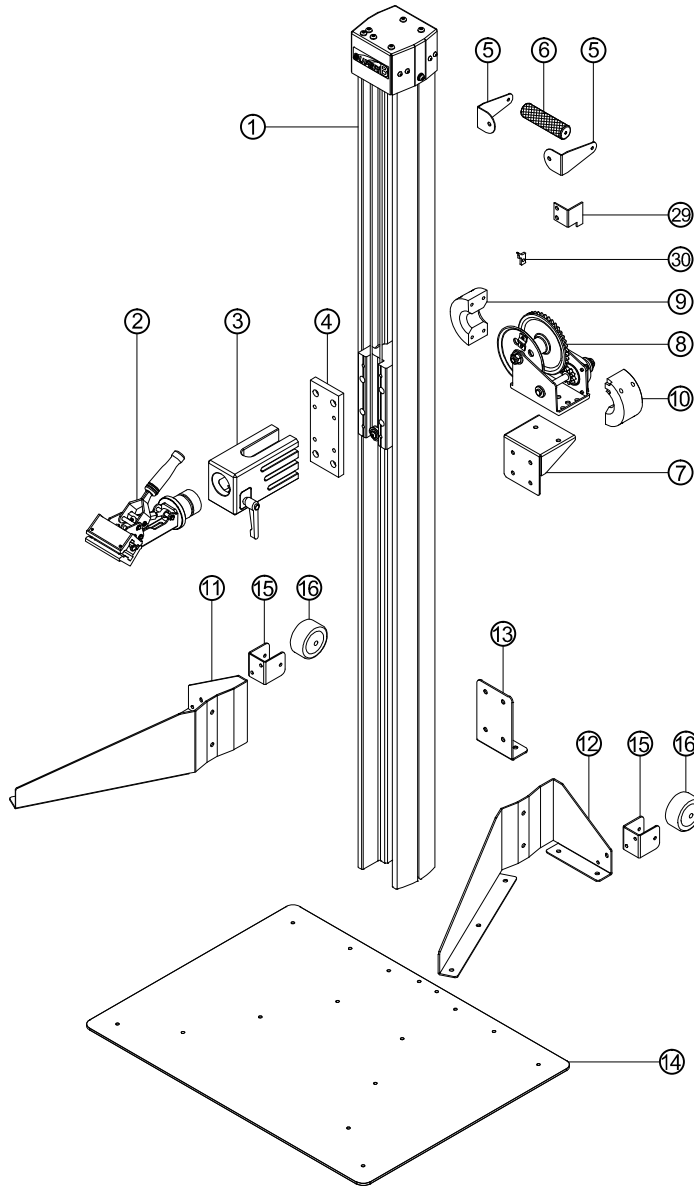


### 1 Name and Quantity of Parts

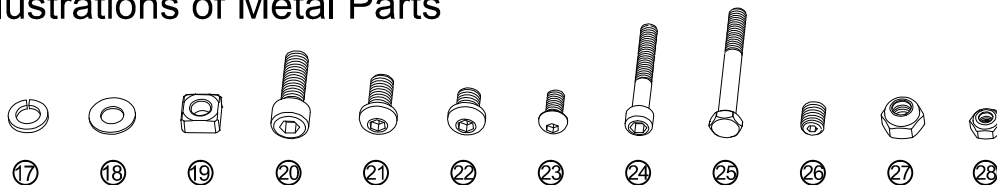


1. See the product information on Super B Website:  
<https://www.superbiketool.com/>  
Click: Product > Product list > Work stands > Page2 > TB-WS55
2. Scan the QR code in the right corner for assembly video



Parts List		
No.	Description	Qty.
①	Upright	1
②	Clamp	1
③	Clamp holder	1
④	Clamp mounting plate	1
⑤	Grip holder	2
⑥	Grip	1
⑦	Winch mounting bracket	1
⑧	Winch	1
⑨	Left winch spacer	1
⑩	Right winch spacer	1
⑪	Left upright support	1
⑫	Right upright support	1
⑬	Back upright support	1
⑭	Base plate	1
⑮	Wheel bracket	2
⑯	Wheel	2
⑰	Spring washer M8	36
⑱	Flat washer M8	30
⑲	Square nut M8	16
⑳	Screw M8x25MM	8
㉑	Screw M8x16MM	18
㉒	Screw M8x10MM	12
㉓	Screw M6x12MM	6
㉔	Screw M6x40MM	4
㉕	Hex head screw M6x50MM	2
㉖	Set screw M8x10MM	4
㉗	Locknut M8	2
㉘	Locknut M6	6
㉙	L-shaped stopper	1
㉚	Steel cable guider	1

### Illustrations of Metal Parts



1. Before assembly, please prepare your own H4/H5/H6 hex wrenches, two 10 mm open-end wrenches, a 13mm open-end wrench, and a 19 mm open-end wrench.
2. At least two persons are required during assembly: one to stabilize the parts and the other to carry out the operation to ensure safety.
3. Please make sure to tighten the screws firmly to prevent any components from loosening, thereby avoiding safety concerns during later use.
4. Please watch the assembly video before assembling.

### 2 Assembly Instructions

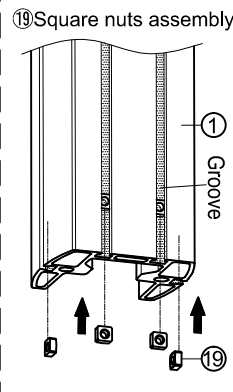


#### Step 1: Assemble grip, L-shaped stopper and winch mounting bracket

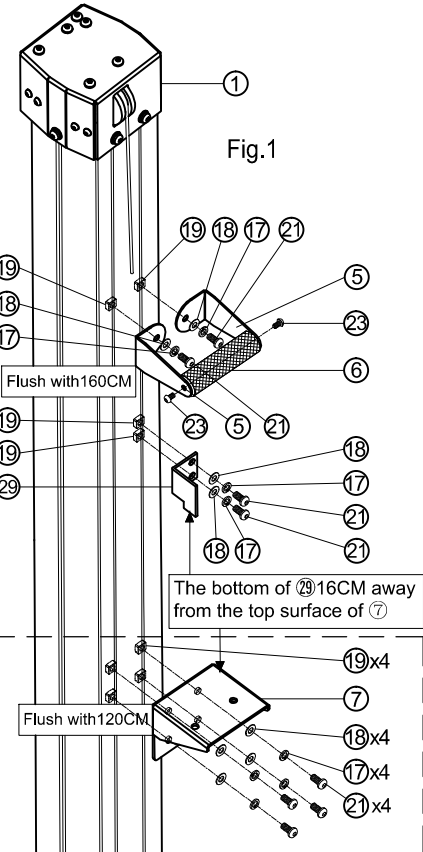
- Place eight ⑱square nuts as shown in Fig. 1.1, positioning them from the bottom up along the grooves of ①upright as shown in Fig. 1.
- Align two ⑤grip holders with two ⑲screws M8, two ⑰spring washers M8, and two ⑱flat washers M8, in sequence with two ⑱square nuts; tighten them in place with an H5 wrench.  
 △ Recommended height of ⑤grip holders is 160cm, which can be adjusted according to personal preference.
- Align ⑥grip with ⑤grip holders, and tighten them in place with two ⑲screws M6 and an H4 wrench to complete the assembly.
- Align ⑲L-shaped stopper in sequence with two ⑲screws M8 and two ⑱flat washers M8 and two ⑱square nuts; tighten them with an H5 wrench. **Note:** ensure the bottom of ⑲L-shaped stopper is 16cm away from the top surface of ⑦winch mounting bracket.
- Assemble ⑦winch mounting bracket as shown in Fig. 1.2. Tighten it with four ⑲screws M8, four ⑰spring washers M8, four ⑱flat washers M8 in sequence, aligning them with four ⑱square nuts. Tighten them with an H5 wrench. Ensure the flat surface of the ⑦winch mounting bracket faces upward.  
 △ When assembling the ⑦winch mounting bracket, it is recommended that the top surface is at a height of 120cm from the ground.

Step 1. Required Parts			
No.	Description	Qty.	Required Tools
①	Upright	1	
⑤	Grip holder	2	
⑥	Grip	1	
⑦	Winch mounting bracket	1	
⑰	Spring washer M8	8	
⑱	Flat washer M8	8	
⑲	Square nut M8	8	
⑲	Screw M8x16MM	8	H5 Wrench
⑲	Screw M6x12MM	2	H4 Wrench
⑲	L-shaped stopper	1	

Fig. 1.1



△ Please place the ①upright on the floor during assembly.

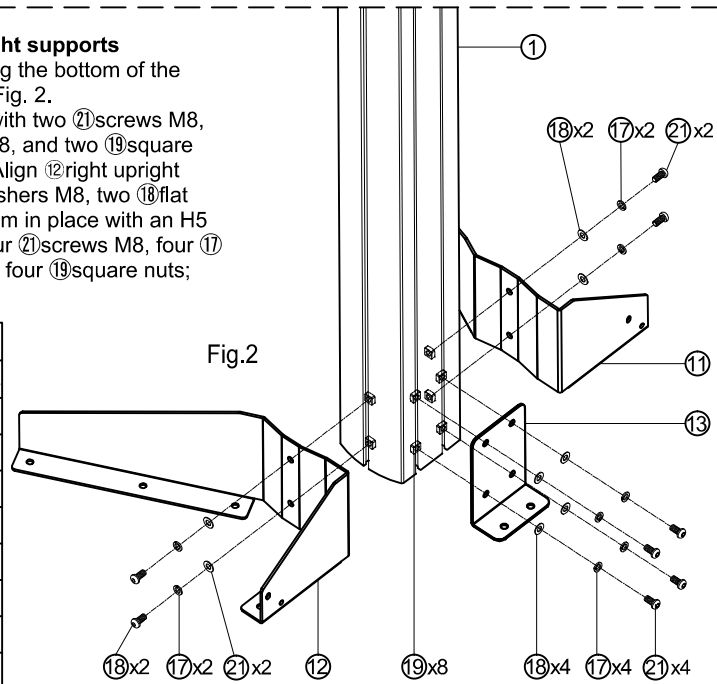


#### Step 2: Assemble the left, right, and back upright supports

- Refer to Fig. 1.1, place eight ⑱square nuts along the bottom of the groove of ①upright, aligning them as shown in Fig. 2.
- As shown in Fig. 2, align ⑪left upright support with two ⑲screws M8, two ⑰spring washers M8, two ⑱flat washers M8, and two ⑱square nuts; tighten them in place with an H5 wrench. Align ⑫right upright support with two ⑲screws M8, two ⑰spring washers M8, and two ⑱square nuts; tighten them in place with an H5 wrench. Align the ⑬back upright support with four ⑲screws M8, four ⑰spring washers M8, four ⑱flat washers M8, and four ⑱square nuts; tighten them in place with an H5 wrench.

Step 2. Required Parts			
No.	Description	Qty.	Required Tools
①	Upright	1	
⑪	Left upright support	1	
⑫	Right upright support	1	
⑬	Back upright support	1	
⑰	Spring washer M8	8	
⑱	Flat washer M8	8	
⑲	Square nut M8	8	
⑲	Screw M8x16MM	8	H5 Wrench

Fig.2



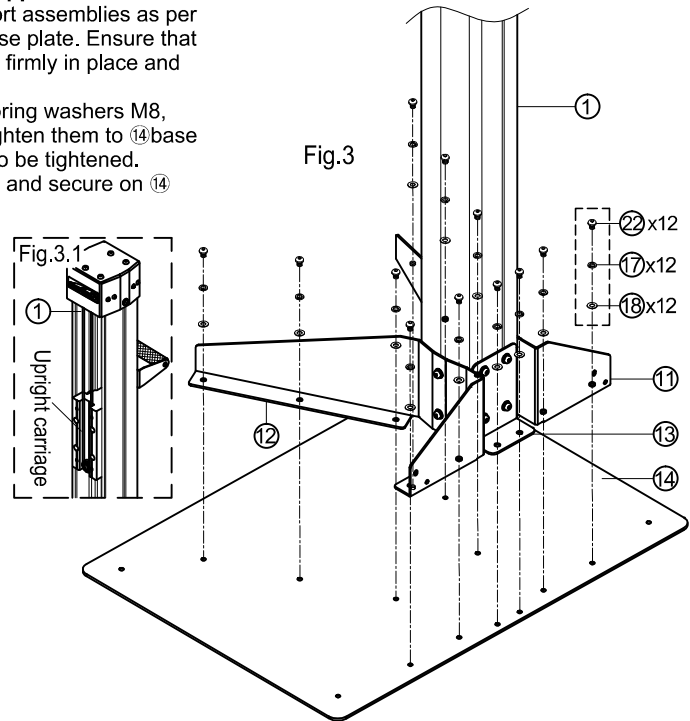


### Step 3: Assemble the base plate and the upright support assemblies

1. After assembling ①upright and ⑪⑫⑬upright support assemblies as per step 2, stand them upright and align them with ⑭base plate. Ensure that ①upright and ⑪⑫⑬upright support assemblies are firmly in place and align with the holes on ⑭base plate.
2. Using the twelve ⑳screws M8 x 10mm, twelve ⑰spring washers M8, and twelve ⑱flat washers M8 as shown in Fig. 3, tighten them to ⑭base plate with an H5 wrench. A total of 12 holes needs to be tightened. Confirm that ⑪⑫⑬upright supports are flush, even, and secure on ⑭base plate to complete the assembly.

⚠ During Step 3, Please have at least two people to install, with one person holding ①upright steadily while the other person performs the assembly to ensure safety.

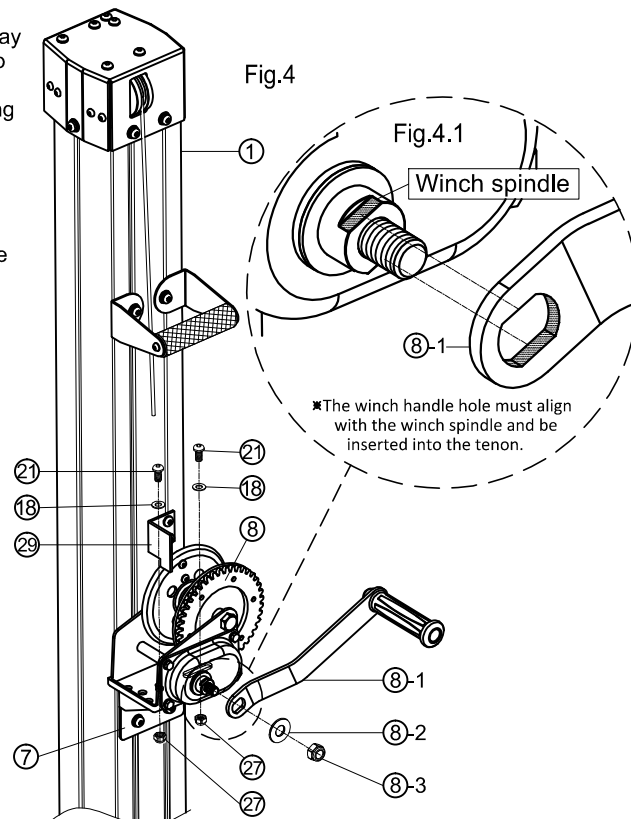
Step 3. Required Parts			
No.	Description	Qty.	Required Tools
①	Upright	1	
⑪	Left upright support	1	
⑫	Right upright support	1	
⑬	Back upright support	1	
⑭	Base plate	1	
⑰	Spring washer M8	12	
⑱	Flat washer M8	12	
⑳	Screw M8x10MM	12	H5 Wrench



### Step 4: Assemble the winch

1. Ensure that the bottom of ⑳L-shaped stopper is 16cm away from the top surface of ⑦winch mounting bracket. (refer to Fig. 1 on Page 2)
2. As shown in Fig. 4, place ⑧winch on the ⑦winch mounting bracket, and align them with the holes.
3. Assemble ⑧winch with two ⑲screws M8 x 16mm, two ⑱flat washers M8, and two ⑳lock nuts M8 to ⑦winch mounting bracket. Tighten them with an H5 wrench.
4. Following Fig. 4.1, insert the ⑧-1 winch handle into the winch spindle slot and then assemble in sequence with the ⑧-2 winch washer and ⑧-3 winch lock nut. Tighten them with a 19mm open-end wrench.

Step 4. Required Parts			
No.	Description	Qty.	Required Tools
①	Upright	1	
⑦	Winch mounting bracket	1	
⑧	Winch	1	
⑧-1	Winch handle	1	
⑧-2	Winch washer	1	
⑧-3	Winch lock nut	1	19mm open-end wrench
⑱	Flat washer M8	2	
⑲	Screw M8x16MM	2	H5 Wrench
⑳	Locknut M8	2	13mm open-end wrench
㉑	L-shaped stopper	1	

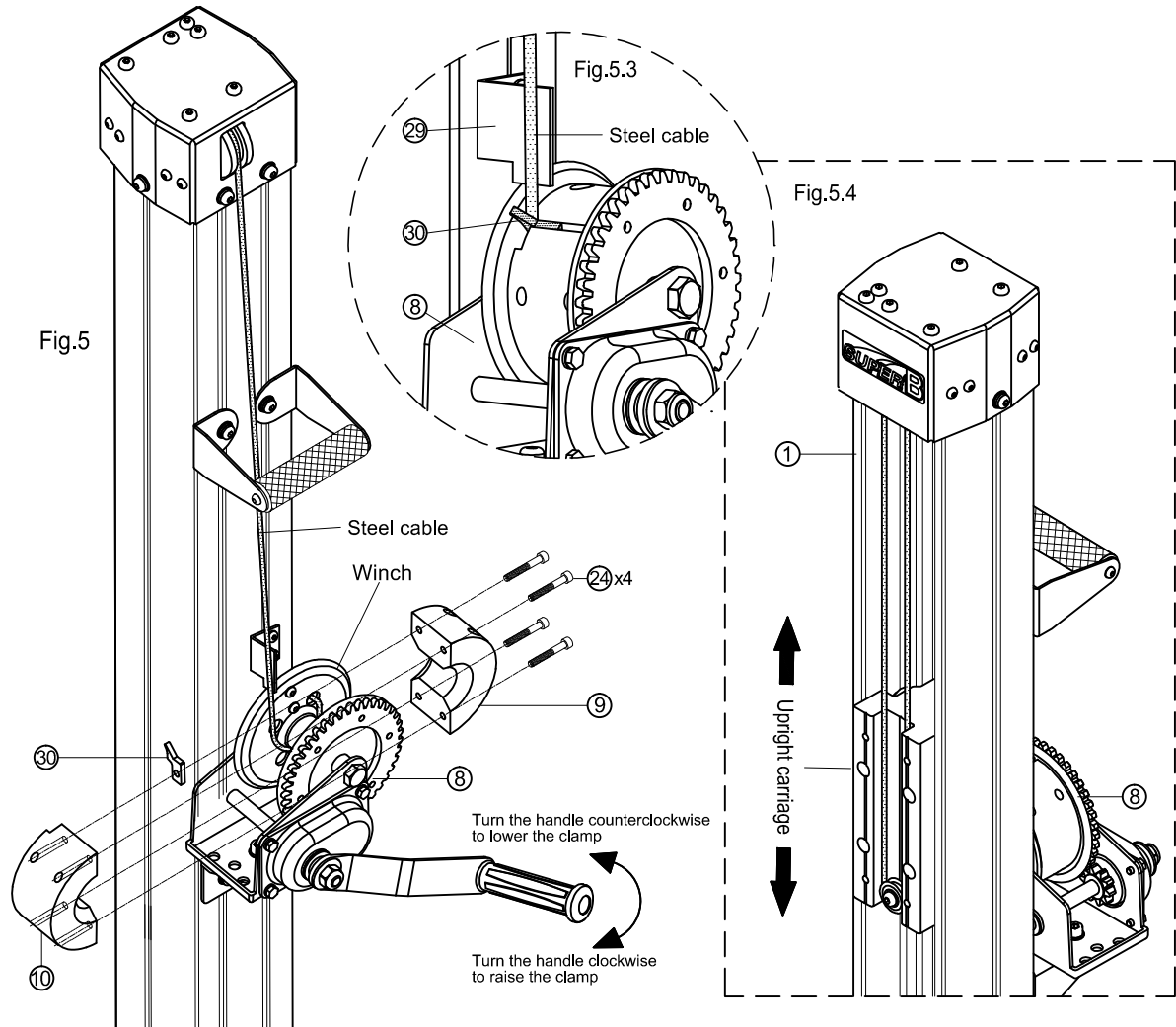
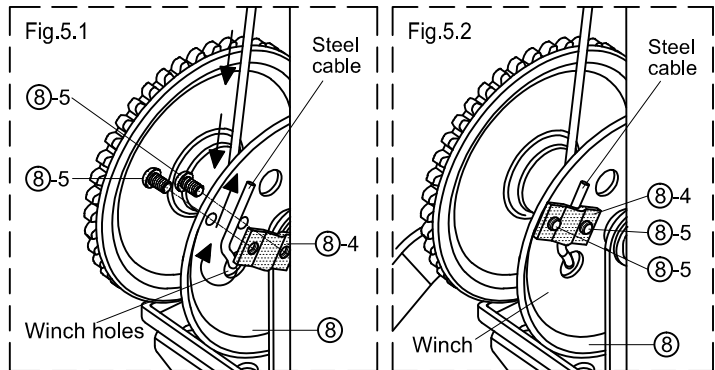




### Step 5: Assembling the winch with steel cable

1. Pull down the steel cable from ① upright, refer to the arrows in Fig. 5 and Fig. 5.1, thread the steel cable through the hole of winch. According to Fig. 5.2, use the H4 hex wrench to tighten two ⑧-5 steel cables fixing screws, steel cable, and ⑧-4 steel cable fixing plate onto the winch.
2. According to Fig. 5, rotate the ⑧ winch clockwise until the steel cable winds around the ⑧ winch once, positioning the steel cable as shown in Fig. 5. Assemble the ⑧ winch, ⑨ left and ⑩ right winch spacers, and ③ steel cable guider with four ② screws M6 and an H5 wrench. The steel cable should be pulled out along the inner side of the ⑲ L-shaped stopper, following the gap in the spacers, as illustrated in Fig. 5.3.
3. Following Fig. 5, test the ⑧ winch by turning it clockwise. As shown in Fig. 5.4, raise the upright carriage to a height of 180cm. Then, turn it counterclockwise to lower the upright carriage to the lowest position. Ensure that the steel cable is restricted from rotating by the ⑲ L-shaped stopper when the steel cable is all rolling out. This completes the assembly.

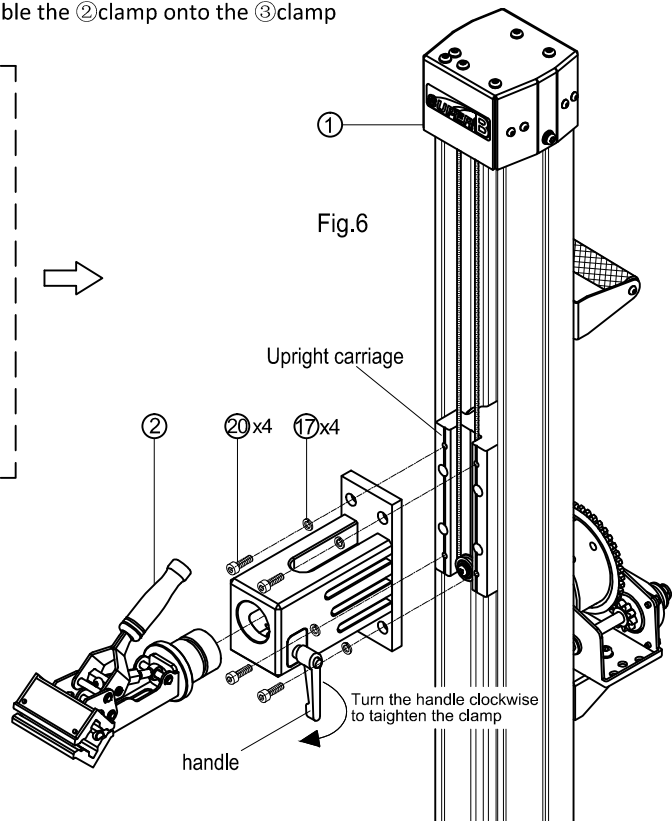
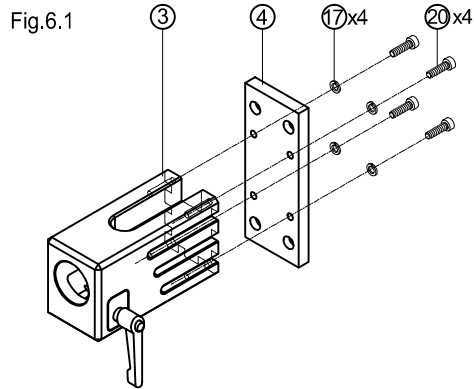
Step 5. Required Parts			
No.	Description	Qty.	Required Tools
①	Upright	1	
⑧	Winch	1	
⑧-4	Steel cable fixing plate	1	
⑧-5	Steel cable fixing screws	2	H4 Wrench
⑨	Left winch spacer	1	
⑩	Right winch spacer	1	
②	Screw M6x40MM	4	H5 Wrench
③	Steel cable guider	1	





### Step 6: Clamp Assembly

1. According to Fig. 6.1, use four ⑰M8 spring washers and four ⑳screws M8 x 25 mm with an H6 hex wrench to tighten ③clamp holder and ④clamp mounting plate. There are a total of 4 holes to secure.
2. According to Fig. 6, secure the assembled ③clamp holder and ④clamp mounting plate to ①upright carriage with four ⑳screws M8 x 25 mm and four ⑰spring washers M8; using an H6 wrench to tighten them. Then, assemble the ②clamp onto the ③clamp mounting bracket and turn the handle clockwise.



#### Step 6. Required Parts

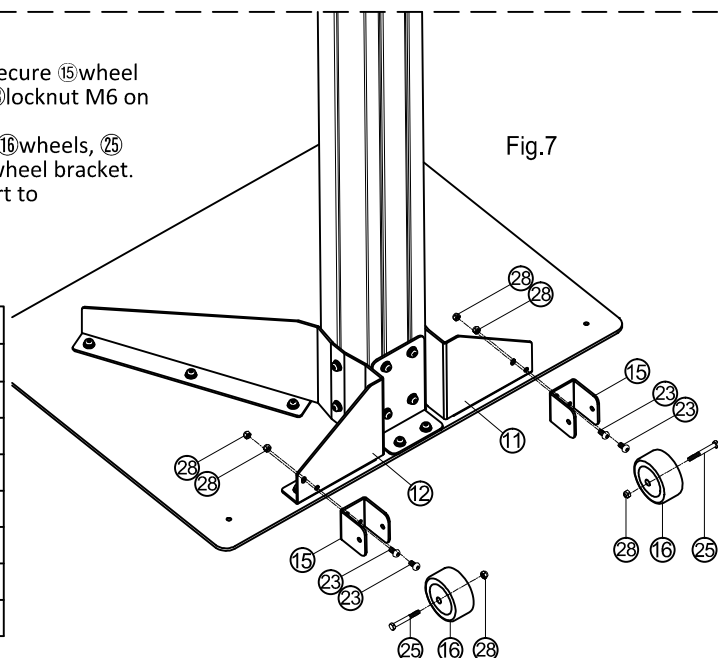
No.	Description	Qty.	Required Tools
①	Upright	1	
②	Clamp	1	
③	Clamp holder	1	
④	Clamp mounting plate	1	
⑰	Spring washer M8	8	
⑳	Screw M8x25MM	8	H6 Wrench

### Step 7: Wheel assembly

1. According to Fig. 7, use an H4 hex wrench to secure ⑮wheel bracket, two ⑲screws M6 x 12mm, and two ⑳locknut M6 on ⑪left upright support.
2. Use two 10mm open-end wrenches to secure ⑮wheels, ⑳screw M6 x 50mm, and ㉑locknut M6 on the wheel bracket.
3. Repeat steps 1 and 2 on ⑫right upright support to complete the assembly of the wheels.

#### Step 7. Required Parts

No.	Description	Qty.	Required Tools
⑪	Left upright support	1	
⑫	Right upright support	1	
⑮	Wheel bracket	2	
⑯	Wheel	2	
⑲	Screw M6x12MM	4	
⑳	Hex head screw M6x50MM	2	
㉑	Locknut M6	6	



### 3 Instructions for User



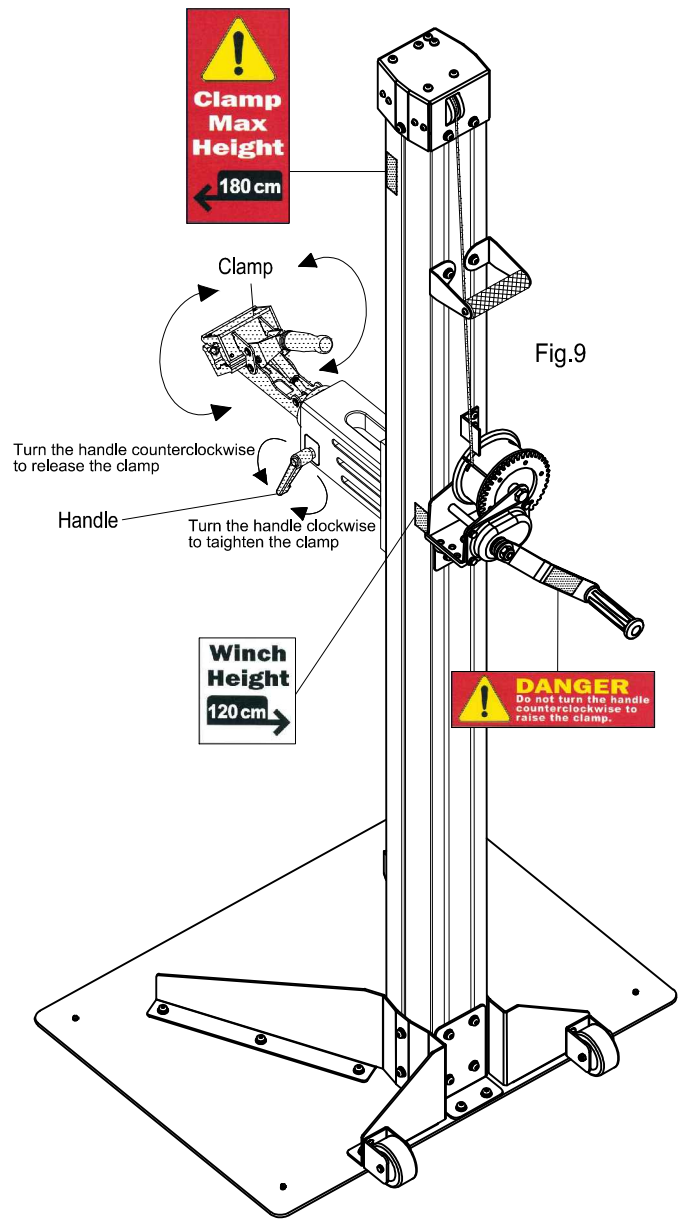
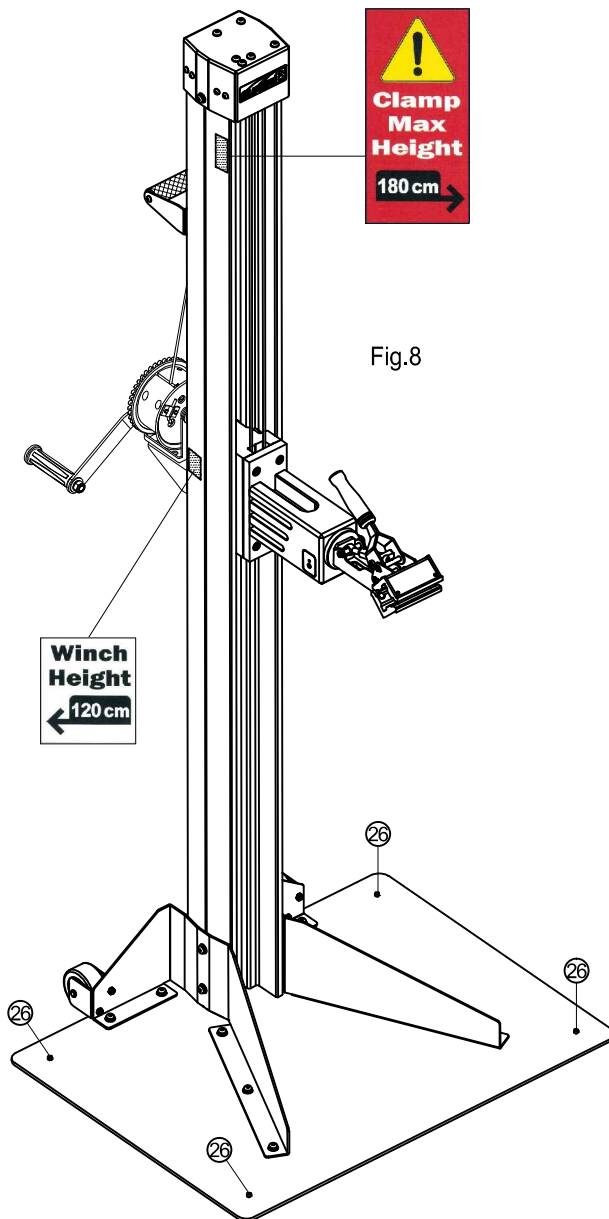
✳Before use, please check that all screws and components are completely and securely tightened.

#### A. Base plate Stability Adjustment

1. Assemble four ②6 set screws M8 x 10mm into the holes on the base plate (as shown in Fig. 8).
2. Test the base plate for any uneven conditions at the four corners. Use an H4 hex wrench to adjust the ②6 set screws at uneven spots until they are against the ground and there is no wobbling.

#### B. Clamp Angle Adjustment

1. Before use, ensure that the handle is tightened (as shown in Fig. 9)
2. Turn the handle counterclockwise to release the clamp, allowing it to freely adjust its angle.
3. After confirming the desired clamp head angle, turn the handle clockwise to secure it, completing the angle adjustment of the clamp



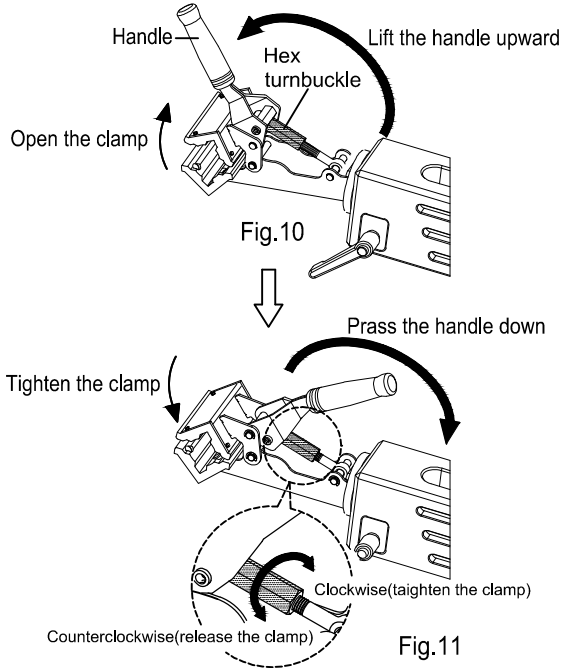


### C. Clamp Opening Adjustment

1. Lift the handle upward to open the clamp (as shown in Fig. 10).
2. Place the frame (you can choose top tube, seat tube, or seat post) into the clamp opening. Adjust the hex turnbuckle to the appropriate position based on the frame size. Then, press the handle down to secure the frame.

#### Adjustment Method:

1. As shown in Fig. 11, turn the hex turnbuckle clockwise to moderately tighten the clamp, making the clamp opening slightly smaller.
2. As shown in Fig. 11, turn the hex turnbuckle counterclockwise to moderately loosen the clamp, making the clamp opening slightly larger.

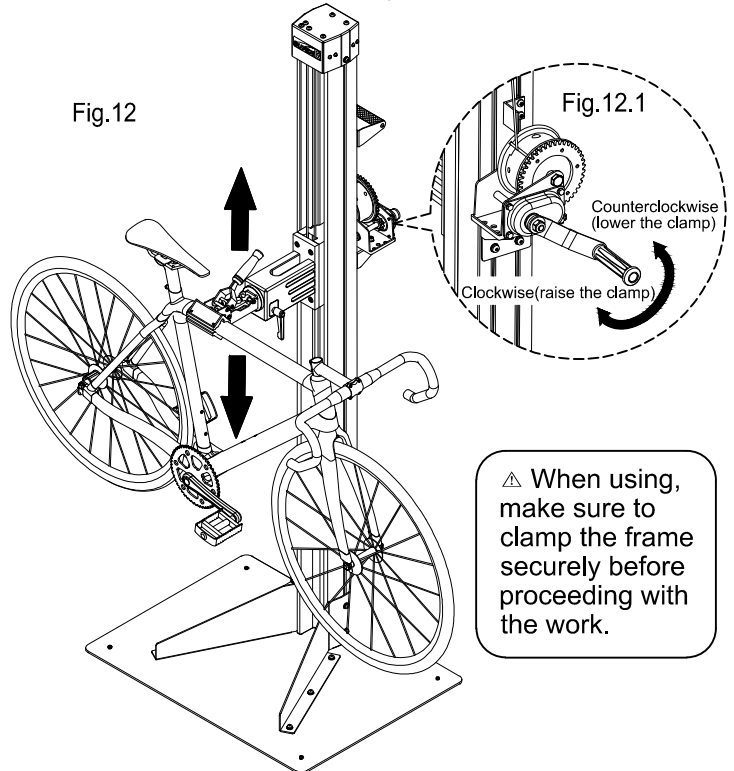


### D. Clamp Height Adjustment

1. Secure the bicycle with the clamp, ensuring it's stable and doesn't wobble (as shown in Fig. 12).

#### Adjustment Instructions:

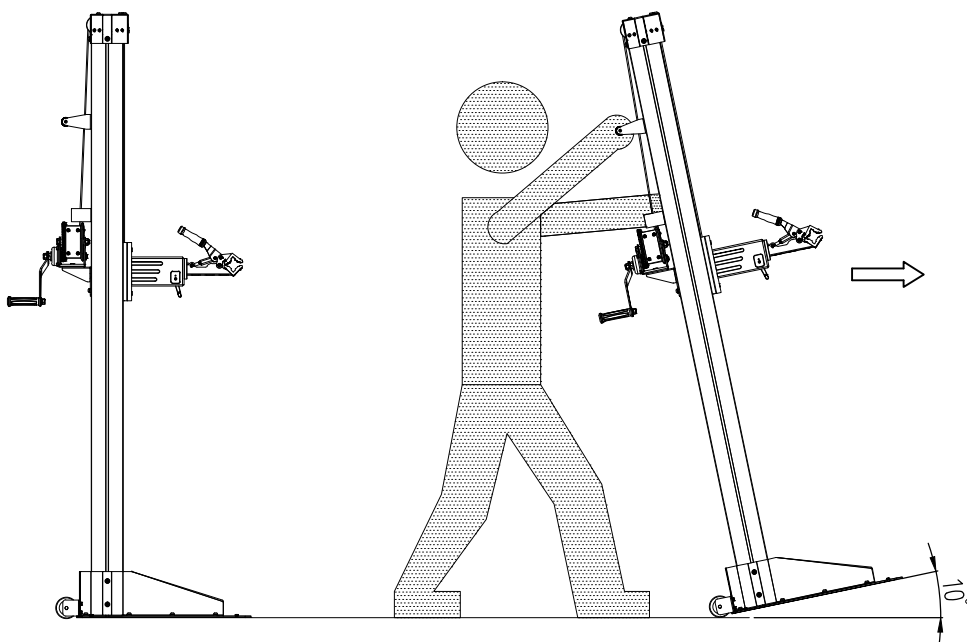
1. Turn the winch handle clockwise, as shown in Fig. 12.1, to raise the clamp.
2. Turn the winch handle counterclockwise, as shown in Fig. 12.1, to lower the clamp.  
 ⚠ If turning the clamp counterclockwise results in it rising, it's an assembly error. Please refer to the instruction manual or video for reassembly.



⚠ When using, make sure to clamp the frame securely before proceeding with the work.

### E. How to Move the Repair Stand

1. Remove the bicycle from the repair stand.
  2. Hold the grip and tilt the repair stand at approximately 10 degrees.
  3. Steady the repair stand and push it to the desired location for placement.
- ⚠ When moving the repair stand, please be mindful of your surroundings and your own safety.

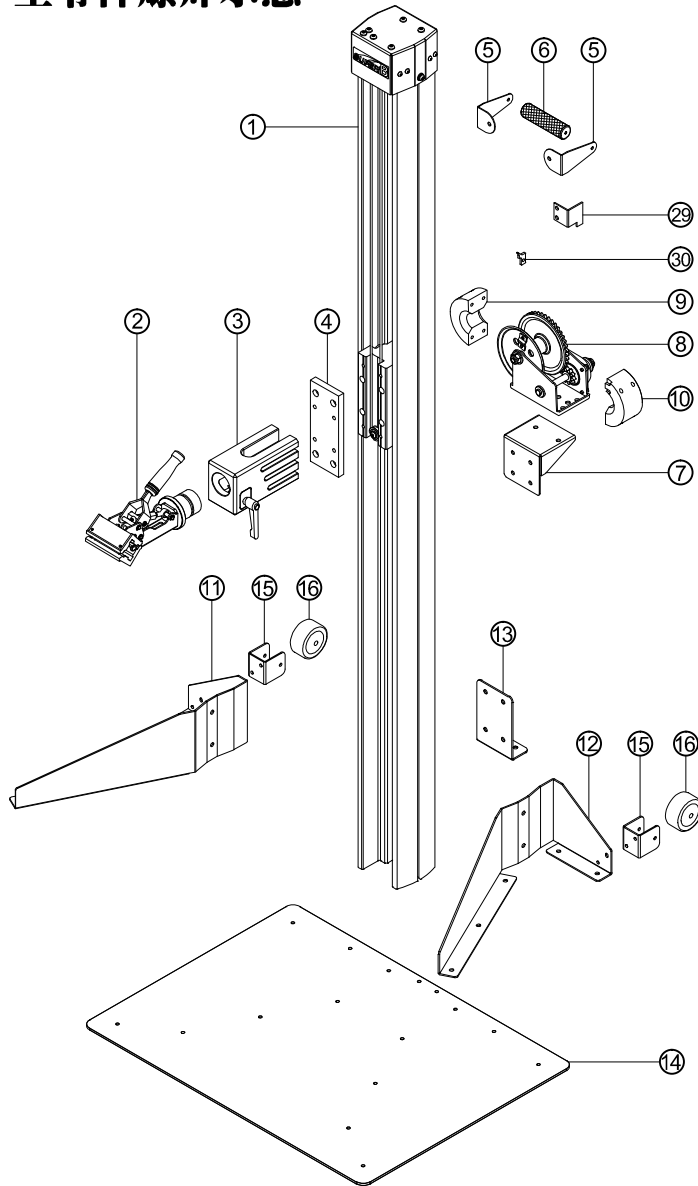


# 1 零件名稱及數量

1. 詳細產品資訊請至SuperB官網<http://www.superbiketool.com/>觀看  
點擊Product ▸ Product list ▸ Work stands ▸ 第2頁 ▸ TB-WS55
2. 掃描右側二維碼觀看產品操作影片

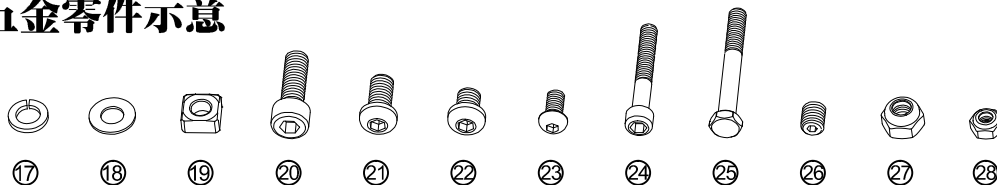


## 主零件爆炸示意



組裝零件數量總表		
項次	名稱	數量
①	主體柱組	1
②	夾頭組	1
③	夾頭固定座	1
④	夾頭固定板	1
⑤	握把座	2
⑥	握把	1
⑦	捲揚機固定座	1
⑧	捲揚機	1
⑨	捲揚機墊塊左	1
⑩	捲揚機墊塊右	1
⑪	主體支撐板左	1
⑫	主體支撐板右	1
⑬	主體支撐板後	1
⑭	底板	1
⑮	輪子座	2
⑯	輪子	2
⑰	M8彈簧華司	36
⑱	M8平華司	30
⑲	M8四角螺帽	16
⑳	圓頭M8螺絲25L	8
㉑	半丸頭M8螺絲16L	18
㉒	半丸頭M8螺絲10L	12
㉓	半丸頭M6螺絲12L	6
㉔	圓頭M6半牙螺絲40L	4
㉕	六角頭M6螺絲50L	2
㉖	M8止付螺絲10L	4
㉗	M8防滑螺帽	2
㉘	M6防滑螺帽	6
㉙	L形限位片	1
㉚	鋼索導引片	1

## 五金零件示意



### ⚠ 注意:

1. 組裝前請自備H4/H5/H6六角扳手與10MM開口扳手兩支，13MM/19MM開口扳手各一支
2. 組裝時至少需要兩名工作人員，一人穩定零件一人進行作業，確保組裝安全
3. 組裝螺絲時務必鎖緊，零組件不可鬆動，避免後續使用的安全疑慮
4. 組裝前請先觀看組裝影片



**2 組裝說明**

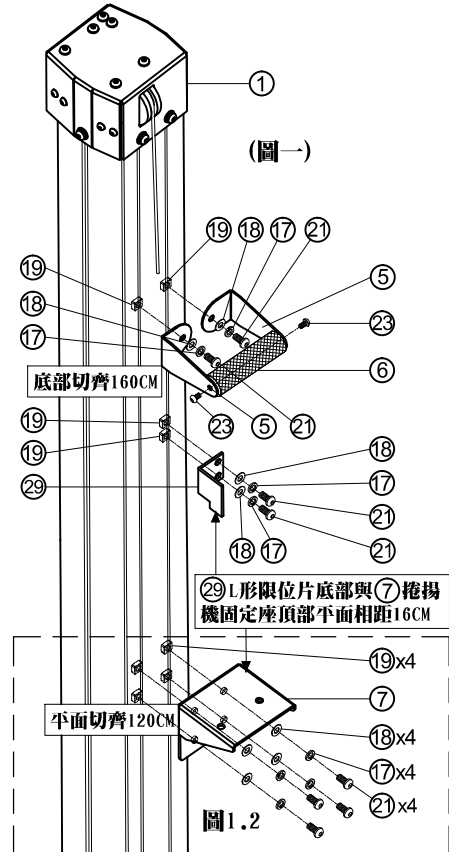
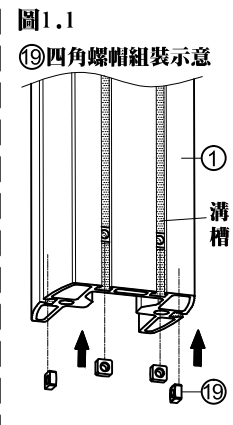


**步驟一、組裝握把、L形限位片與捲揚機固定座**

- 將⑨四角螺帽8PCS依照圖1.1所示，順著①主體柱溝槽底部由下往上依圖一所示位置定位
- 將⑤握把座2PCS用②M8螺絲、⑦M8彈簧華司、⑧M8平華司各2PCS依序與⑨四角螺帽2PCS對齊並用H5扳手鎖固  
 ▲建議⑤握把座組裝底部高度160CM，可依照個人需求調整
- 將⑥握把對齊⑤握把座與③M6螺絲2PCS用H4扳手鎖固完成組裝
- 將⑳L形限位片用②M8螺絲、⑦M8彈簧華司、⑧M8平華司各2PCS依序與⑨四角螺帽2PCS對齊，並用H5扳手固定，注意⑳L形限位片底部需與⑦捲揚機固定座頂部平面相距16CM
- 將⑦捲揚機固定座依圖1.2所示，用②M8螺絲、⑦M8彈簧華司、⑧M8平華司各4PCS依序與⑨四角螺帽4PCS對齊並用H5扳手鎖固，注意⑦捲揚機固定座平面須朝上  
 ▲⑦捲揚機固定座建議組裝時，頂部平面離地高度120CM

▲注意：組裝時請將①主體柱組平放在地板

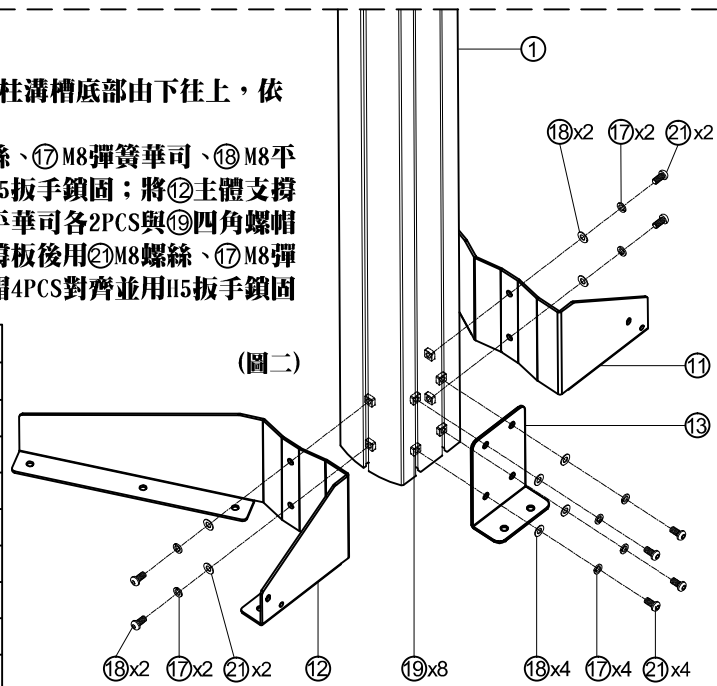
步驟一需求零件			
項次	名稱	數量	使用工具
①	主體柱組	1	
⑤	握把座	2	
⑥	握把	1	
⑦	捲揚機固定座	1	
⑦	M8彈簧華司	8	
⑧	M8平華司	8	
⑨	M8四角螺帽	8	
⑲	半丸頭M8螺絲16L	8	H5六角扳手
⑳	半丸頭M6螺絲12L	2	H4六角扳手
㉑	L形限位片	1	



**步驟二、組裝主體支撐板(左+右+後)**

- 參考圖1.1將⑨四角螺帽8PCS順著①主體柱溝槽底部由下往上，依圖二所示位置定位
- 依圖二所示將①主體支撐板左用⑲M8螺絲、⑦M8彈簧華司、⑧M8平華司各2PCS與⑨四角螺帽2PCS對齊並用H5扳手鎖固；將⑫主體支撐板右用⑲M8螺絲、⑦M8彈簧華司、⑧M8平華司各2PCS與⑨四角螺帽2PCS對齊並用H5扳手鎖固；將⑬主體支撐板後用⑲M8螺絲、⑦M8彈簧華司、⑧M8平華司各4PCS與⑨四角螺帽4PCS對齊並用H5扳手鎖固

步驟二需求零件			
項次	名稱	數量	使用工具
①	主體柱組	1	
⑪	主體支撐板左	1	
⑫	主體支撐板右	1	
⑬	主體支撐板後	1	
⑦	M8彈簧華司	8	
⑧	M8平華司	8	
⑨	M8四角螺帽	8	
⑲	半丸頭M8螺絲16L	8	H5六角扳手



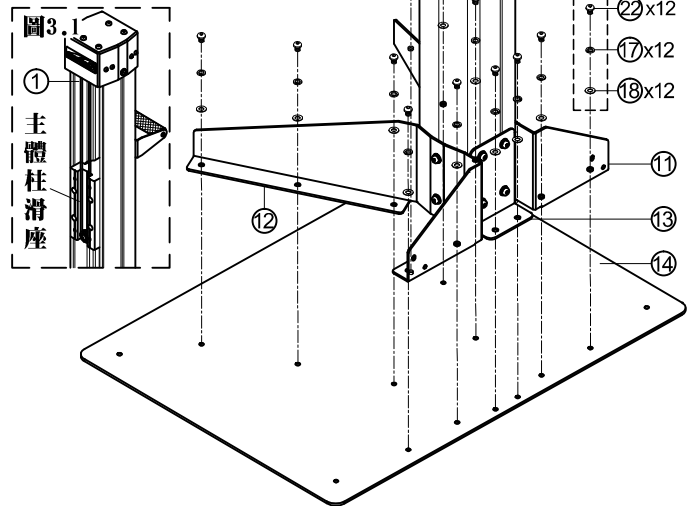


**步驟三、組裝底板與主體支撐板(左+右+後)**

- 將步驟二組裝完成的①主體柱組與主體支撐板(①左+②右+③後)，直立後與⑭底板貼合，確定①主體柱組與主體支撐板(①左+②右+③後)擺放穩固後，對齊⑭底板上孔位
- 將②M8螺絲10L、⑰M8彈簧華司、⑱M8平華司各12PCS依圖三所示用H5扳手鎖固在⑭底板上，總共需鎖固12孔，確認主體支撐板(①左+②右+③後)與⑭底板相互貼合平整穩固後完成組裝

⚠注意：步驟三安裝時需要至少兩人，一人固定①主體柱避免主體柱滑座(圖3.1)掉落，另一人進行組立，確保組裝安全

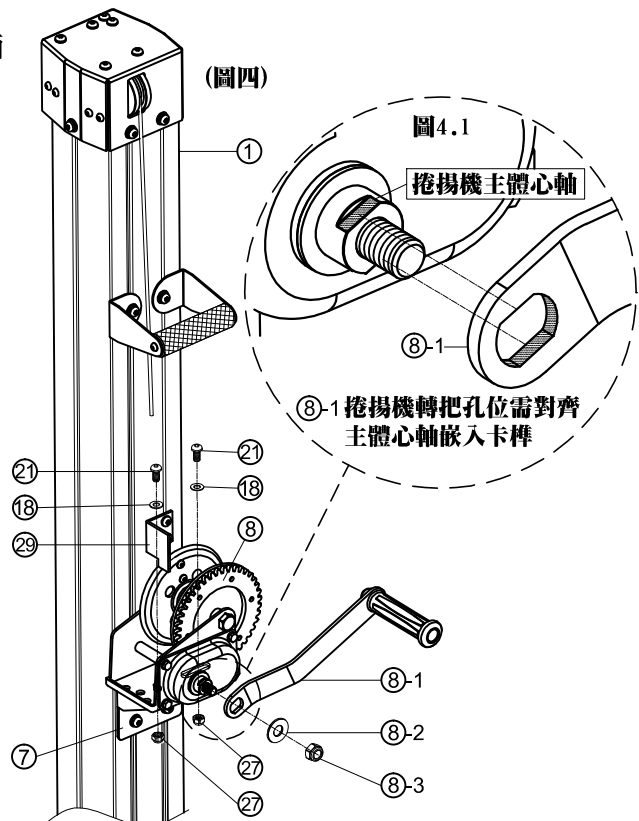
步驟三需求零件			
項次	名稱	數量	使用工具
①	主體柱組	1	
①①	主體支撐板左	1	
①②	主體支撐板右	1	
①③	主體支撐板後	1	
①④	底板	1	
①⑦	M8彈簧華司	12	
①⑱	M8平華司	12	
②②	半丸頭M8螺絲10L	12	H5六角扳手



**步驟四、組裝捲揚機**

- 確定⑳L形限位片底部與⑦捲揚機固定座頂部平面相距16CM(參考P.2圖一所示)
- 依圖四所示，將⑧捲揚機主體放在⑦捲揚機固定座上，對齊孔位
- 將⑧捲揚機主體用H5扳手依序將㉑M8螺絲16L、⑱M8平華司、㉒M8防滑螺帽各2PCS，鎖固在⑦捲揚機固定座上
- 依圖4.1將⑧-1捲揚機轉把嵌入捲揚機主體心軸卡榫，再依圖四組入⑧-2捲揚機用華司與⑧-3捲揚機用防滑螺帽，用19MM開口扳手進行鎖固

步驟四需求零件			
項次	名稱	數量	使用工具
①	鉛擠滑座鋼索組	1	
⑦	捲揚機固定座	1	
⑧	捲揚機主體	1	
⑧-1	捲揚機轉把	1	
⑧-2	捲揚機用華司	1	
⑧-3	捲揚機用防滑螺帽	1	19MM開口扳手
⑱	M8平華司	2	
㉑	半丸頭M8螺絲16L	2	H5六角扳手
㉒	M8防滑螺帽	2	13MM開口扳手
㉓	L形限位片	1	



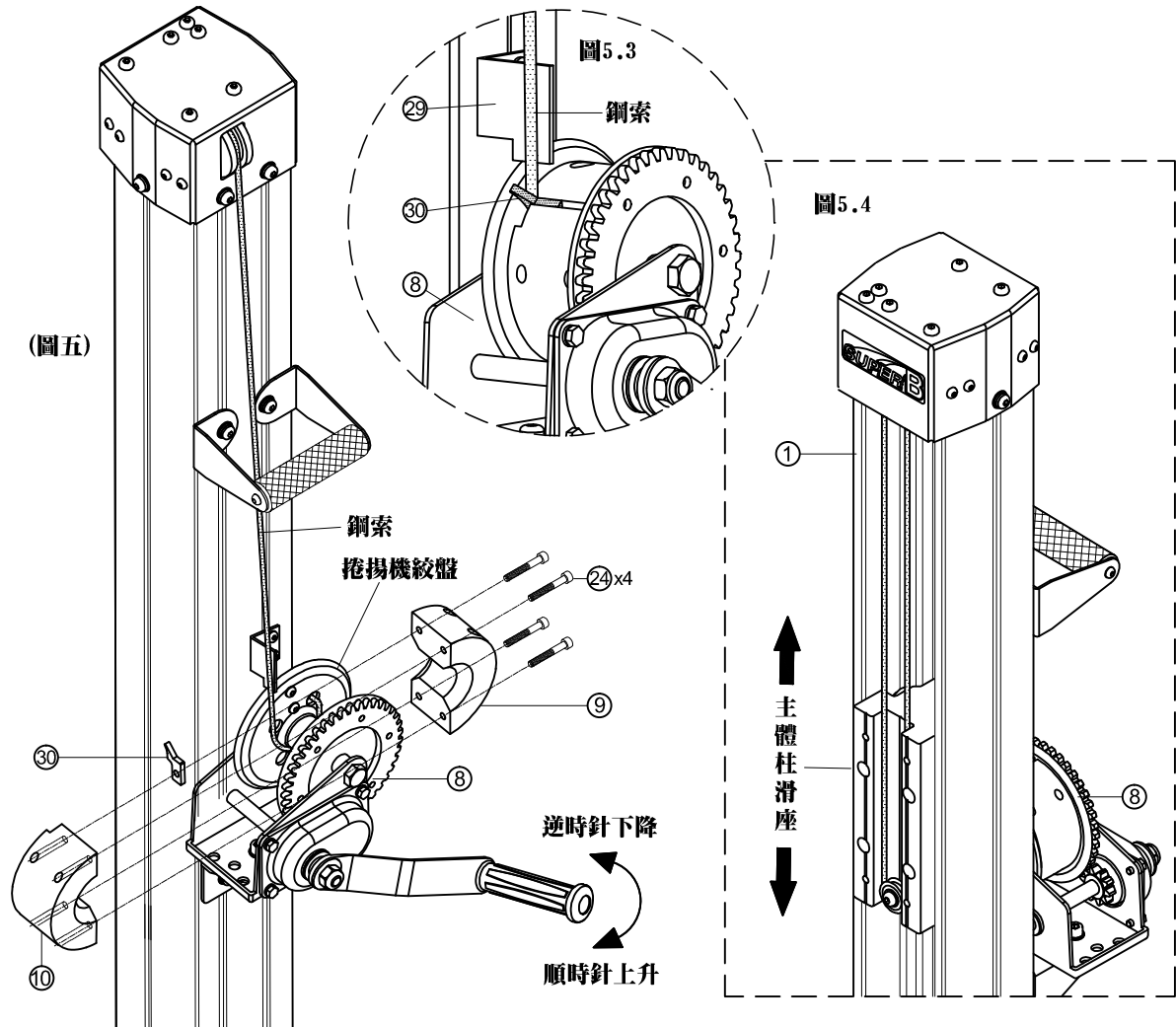
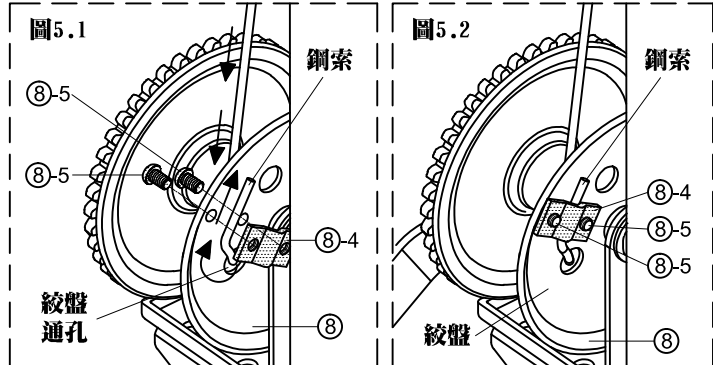


**步驟五、捲揚機與鋼索組裝固定**

1. 將①主體柱上的鋼索下拉，參考圖五與圖5.1箭頭穿過⑧捲揚機絞盤通孔，依圖5.2用H4扳手將⑧-5鋼索固定螺絲2PCS、鋼索與⑧-4鋼索固定片鎖固在⑧捲揚機絞盤上
2. 依圖五所示，順時針轉動⑧捲揚機直到捲揚機絞盤繞一圈，讓鋼索呈現如圖五的狀態，用H5扳手將⑧捲揚機主體、捲揚機墊塊⑨左+⑩右與③⑩鋼索導引片用②④M6螺絲4PCS鎖固，鋼索須依圖5.3所示，在②⑨L形限位片外側並順著墊塊縫隙拉出
3. 依圖五測試順時針轉動⑧捲揚機將圖5.4所示主體柱滑座上升至180CM高，再逆時針轉動將主體柱滑座降至最低且鋼索被②⑨L形限位片限制無法轉動，即完成組裝

步驟五需求零件

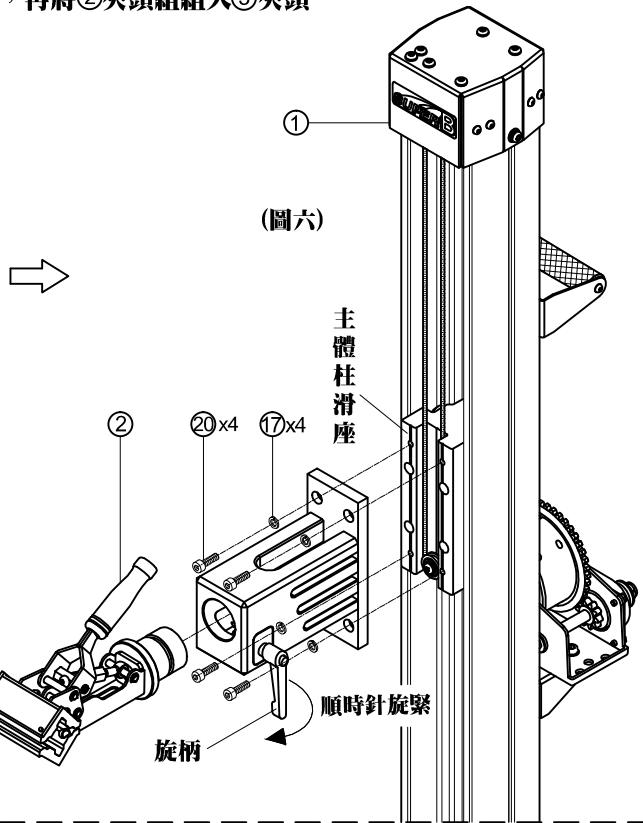
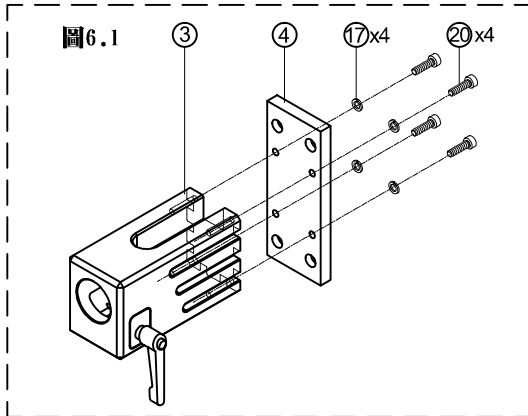
項次	名稱	數量	使用工具
①	主體柱組	1	
⑧	捲揚機主體	1	
⑧-4	鋼索固定片	1	
⑧-5	鋼索固定螺絲	2	H4六角扳手
⑨	捲揚機墊塊左	1	
⑩	捲揚機墊塊右	1	
②④	圓頭M6半牙螺絲40L	4	H5六角扳手
③⑩	鋼索導引片	1	





**步驟六、夾頭組裝**

1. 依圖6.1將③夾頭固定座與④夾頭固定板用⑰M8彈簧華司、⑳M8螺絲25L各4PCS用H6扳手鎖固，共4孔
2. 依圖六將組裝好的③夾頭固定座與④夾頭固定板用⑳M8螺絲25L、⑰M8彈簧華司各4PCS用H6扳手鎖固在①主體柱滑座上，再將②夾頭組組入③夾頭固定座上，順時針旋緊旋柄



步驟六需求零件

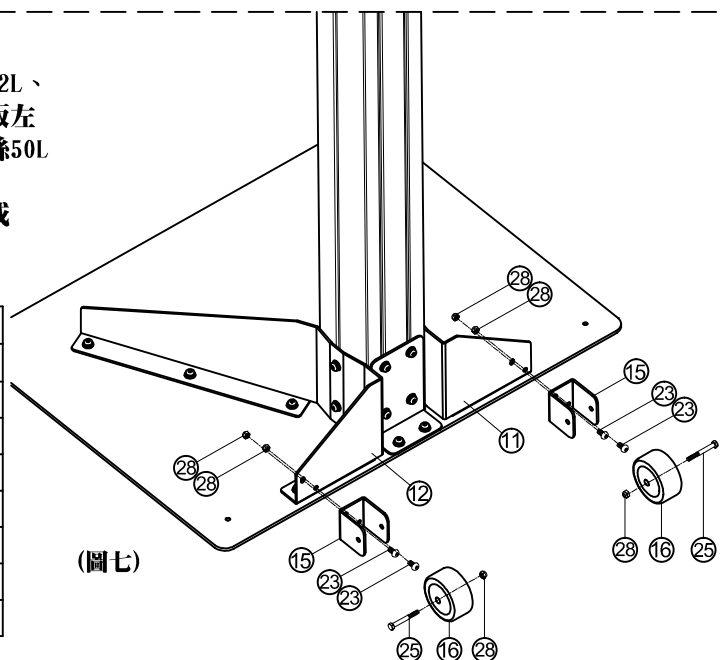
項次	名稱	數量	使用工具
①	主體柱組	1	
②	夾頭組	1	
③	夾頭固定座	1	
④	夾頭固定板	1	
⑰	M8彈簧華司	8	
⑳	圓頭M8螺絲25L	8	H6六角扳手

**步驟七、輪子組裝**

1. 依圖七用H4扳手將⑮輪子座、⑳M6螺絲12L、㉘M6防滑螺帽各2PCS鎖固在①主體支撐板左
2. 用兩支10MM開口扳手將⑯輪子、㉘M6螺絲50L、㉘M6防滑螺帽鎖固在⑮輪子座上
3. 在②主體支撐板右重複1.2.點的步驟完成輪子組裝

步驟七需求零件

項次	名稱	數量	使用工具
①	主體支撐板左	1	
②	主體支撐板右	1	
⑮	輪子座	2	
⑯	輪子	2	
㉘	半丸頭M6螺絲12L	4	H4六角扳手
㉙	六角頭M6螺絲50L	2	10MM開口扳手
㉚	M6防滑螺帽	6	10MM開口扳手



3 使用說明



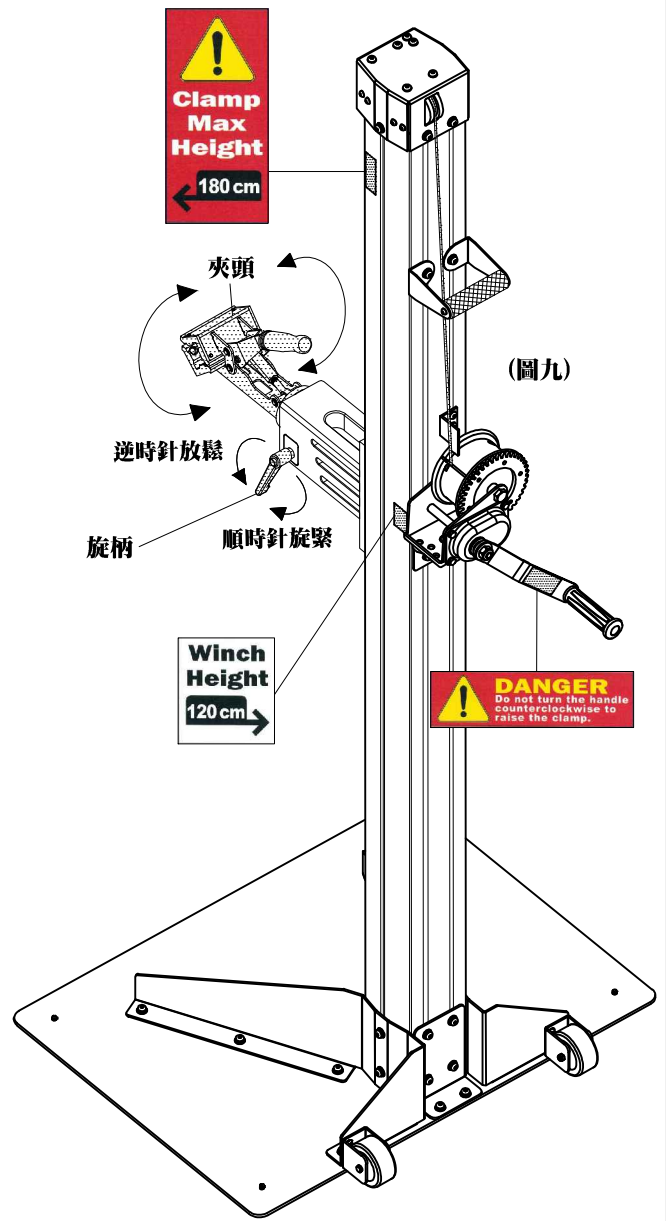
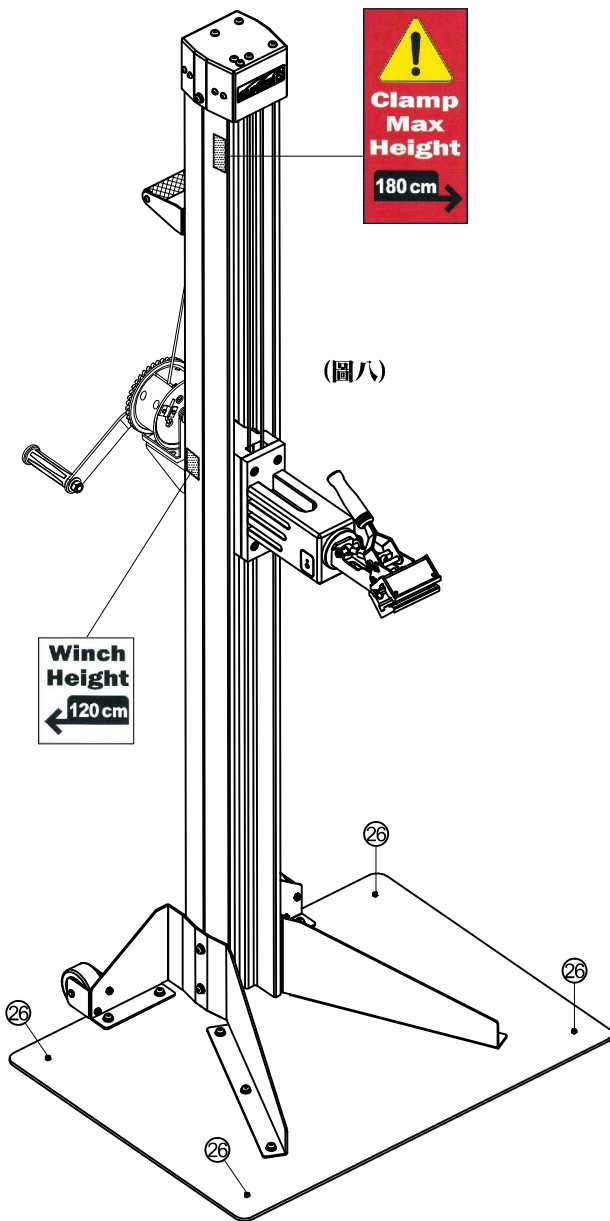
※使用前須檢查所有螺絲與零件皆完全鎖緊且牢固

一、底板穩定性微調

1. 將Ⓜ8止付螺絲10L共4PCS組裝在底板的孔內(如圖八所示)
2. 測試底板四角是否有不平的狀況,用H4六角扳手調整不平處的Ⓜ止付螺絲,直到抵住地面而不搖晃即可

二、夾頭角度調整

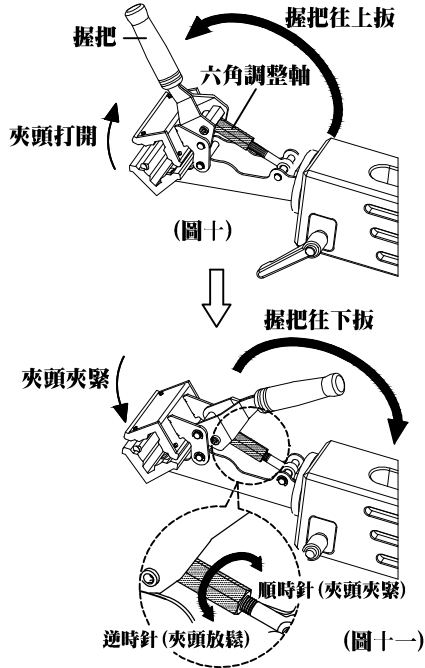
1. 使用前須確保旋柄旋緊(如圖九所示)
2. 將旋柄逆時針轉動放鬆,夾頭即可自由轉動角度
3. 確認夾頭角度後,再將旋柄順時針旋緊即完成夾頭角度調整





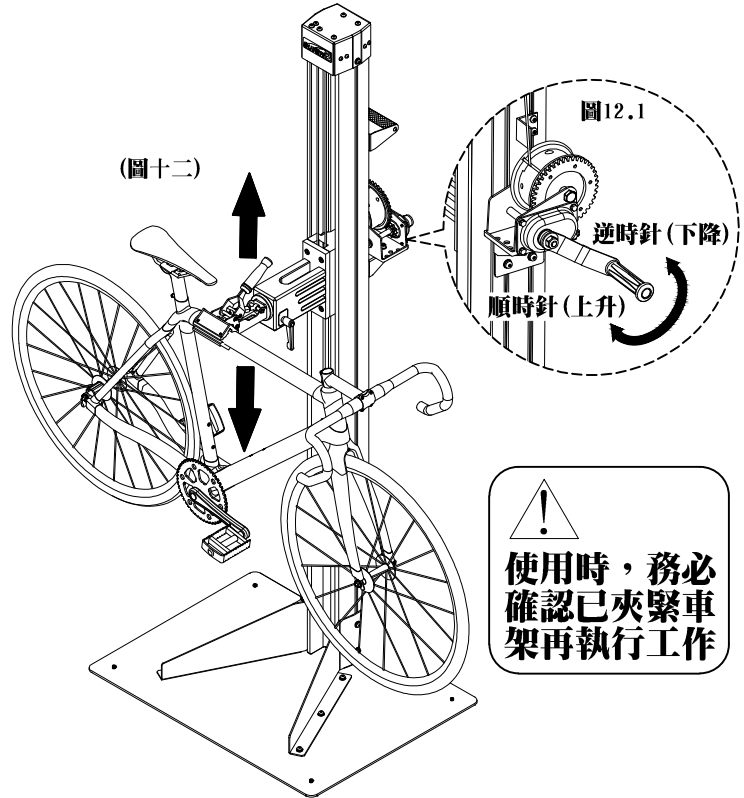
三、夾頭開口調整方式

1. 將握把往上扳，打開夾頭。(如圖十所示)
  2. 將車架(可選擇上管/立管/座管)放入夾頭開口，依車架尺寸將六角調整軸旋轉至適當位置，再將握把下壓固定車管。
- 調整方式：
1. 依圖十一所示將六角調整軸順時針旋轉，可適度鎖緊夾頭，使夾頭開口微調變小。
  2. 依圖十一所示將六角調整軸逆時針旋轉，可適度放鬆夾頭，使夾頭開口微調變大。



四、夾頭升降調整方式

1. 用夾頭將自行車夾緊固定，確認穩固不搖晃。(如圖十二所示)
- 調整方式：
1. 依圖12.1所示將捲揚機握把順時針旋轉，可使夾頭上升。
  2. 依圖12.1所示將捲揚機握把逆時針旋轉，可使夾頭下降。
- ⚠️逆時針旋轉夾頭會上升為組裝錯誤，請參考說明書或影片重新組裝。



五、修車架移動方式

1. 先將修車架上的自行車卸下
  2. 抓住握把將修車架傾斜約10度
  3. 將修車架扶好並推去想移動到的地方安置即可
- ⚠️移動修車架時請注意周遭環境與自身安全

